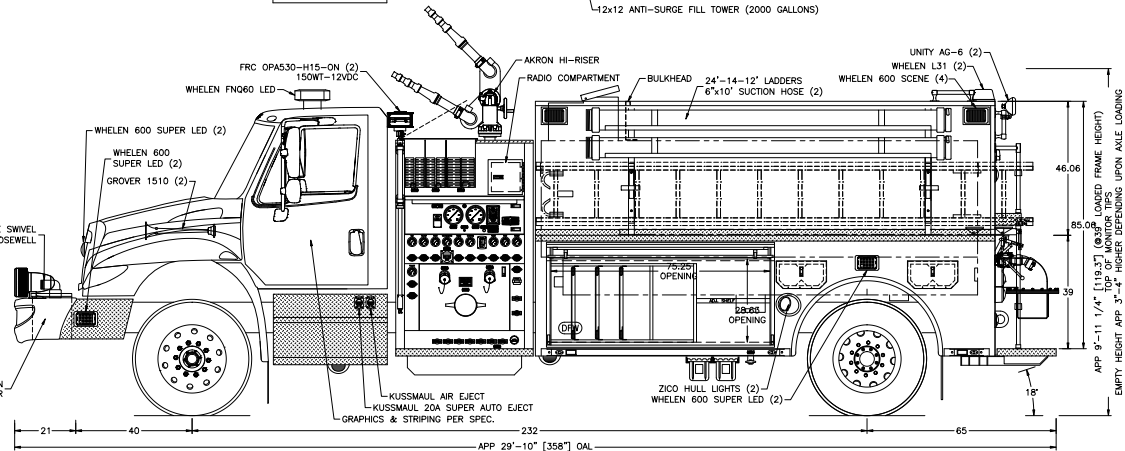
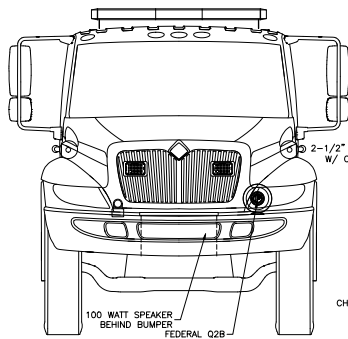
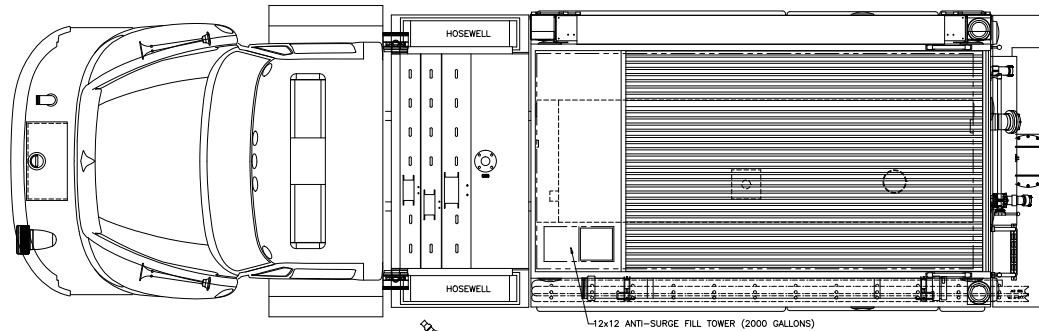


TREADBRITE TEXTURE NOT SHOWN IN TOP VIEW

REFERENCE SCALE IN INCHES

COMP.	HEIGHT	WIDTH	USABLE DEPTH		DIVIDE	FT*
			UPPER	LOWER		
DFW	36.62	81.88	10	26	28	38.59
RFW	36.62	81.88	10	26	28	38.59
HOSEBED	12	76	-	12	-	67.03
FRONT XLAY	16	7	-	76	-	4.93
MIDDLE XLAY	16	7	-	76	-	4.93
REAR XLAY	16	10	-	76	-	7.04



NOTE:

DIMENSIONS SHOWN ARE APPROXIMATE AND ARE SUBJECT TO MINOR CHANGE AS MAY BE FOUND NECESSARY DURING CONSTRUCTION. MINOR DETAILS MAY NOT BE SHOWN. IF DISCREPANCIES EXIST BETWEEN THIS DRAWING AND THE WRITTEN SPECIFICATIONS PROVIDED BY TOYNE, THE WRITTEN SPECIFICATIONS SHALL PREVAIL.

CHASSIS: IHC 4400SBA	TOYNE FIRE APPARATUS	
WB-CA: 232"-164.9"-43"	BREDA, IOWA 51436	
BODY: ALUMINUM	LAFAYETTE	
PUMP: HALE QMAX 1500	COMMERCIAL TANKER	
TANK: 2000 UPF POLY	SCALE: 1/66	CAD BY: SCHMCHR
GENSET: N/A	DATE: 03 OCT 2011	DISC:
FOAM: N/A		lafayette-a